

TomTom WEBFLEET

Intelligence at your fingertips making your business smarter.

TomTom WEBFLEET is our online fleet and order management application that is available 24 hours a day, from any PC with Internet connection.

TomTom WEBFLEET is everything you need to manage your commercial vehicles online, allowing you to make reports, send and receive messages, coordinate movements and generally manage your field service operations seamlessly from the office.

Tracking & tracing

Real-time localisation and enhanced tracking of your vehicles - any time, anywhere. View the vehicles exact position and recent movements on the map. The interactive map gives you everything you need to know, right at your fingertips - vehicle status, driver details, destination address and estimated time of arrival. You will be able to plan efficiently and respond to your customers immediately with reliable and real-time information.

The vehicle track (with 90 day history) shows the actual speeds measured on route and visually displays the stops on route.

A wide range of reports is available including detailed information on trips, stops and speed profile.

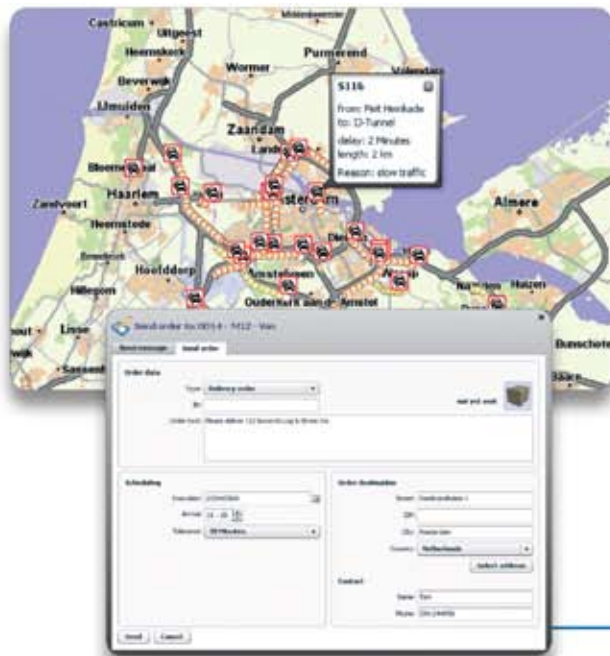


Two-way communication

Communicate efficiently with your people on the road. Directly send text messages to the drivers in the field with just one click of the mouse. You are always up to date with the latest information through a clear overview of incoming messages from your drivers.

No more ringing round to find out who is available and the ability to send unlimited text messages can save you up to 40% on your phone bill.

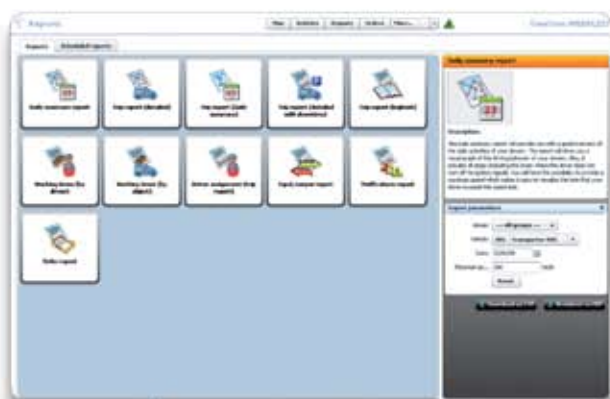




Order management

Smartly allocate the orders based on real-time information ranging from driver availability and the nearest vehicle to traffic information on the route. Avoid delays and keep your fleet out of the jams where possible.

The order menu in TomTom WEBFLEET is simple to use. With predefined addresses you will save valuable time on order entry. Clear and detailed instructions will be sent to the driver which reduces errors and ultimately keeps your customer happy. You can instantly track progress of all orders or print a report for administrative purposes.



Professional reporting

Generate a professional report with half the effort. TomTom WEBFLEET is able to generate reliable reports on working times, trips, mileage and orders. This is a huge time saver for both the people on the road and in the office. Additionally, integration of fleet data into third party software potentially brings even more efficiencies to payroll and billing processes.

Easy to use

With TomTom WEBFLEET you don't need to have the technical expertise to become an expert in managing your fleet and order operations. TomTom WEBFLEET is highly intuitive in its use and you will get acquainted with its functionalities in no time. As TomTom WEBFLEET is a web based application, you do not need to install any software nor do you need other IT resources. TomTom WEBFLEET can be securely accessed from any PC with Internet access, 24 hours a day, 7 days a week.

Wrap up

- Save costs
- Increase service
- Plan efficiently
- Smart
- Interactive
- Intuitive
- Easy to use

Technical requirements

- Requires a PC with internet access (DSL, Cable)
- Runs in web browser - no software installation
- Adobe Flash Player version 9.0.115 required or higher
- CPU speed at least 1 GHz
- RAM at least 1 GB
- Screen resolution at least 1024x768 (optimized for 1280x1024)